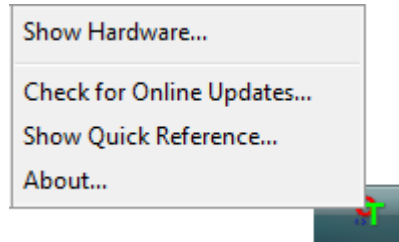


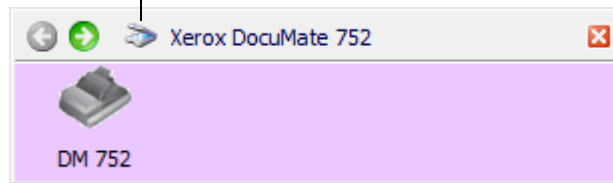
How to Adjust the Power Save Settings for the DocuMate 752

1. Right-click on the One Touch icon and choose **Show Hardware** from the pop-up menu.



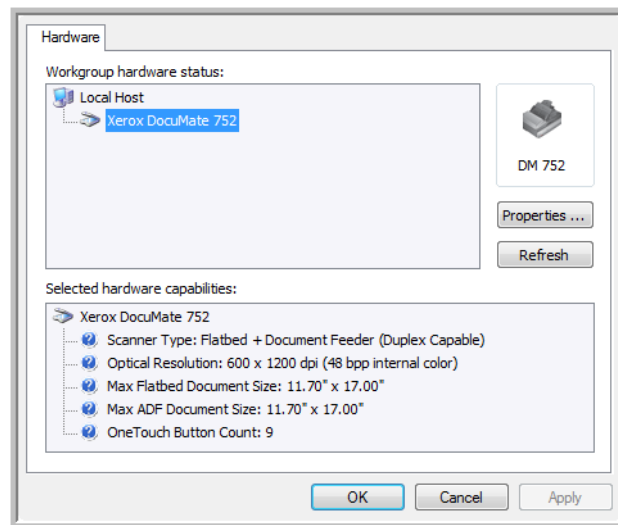
You can also click the scanner icon at the top of the One Touch Button Panel.

The Hardware icon.

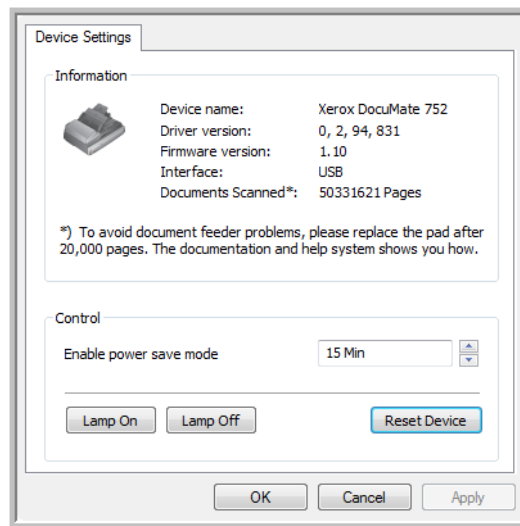


If the Hardware View of the panel is open you can also right-click on the DM 752 icon.

The Hardware Properties dialog box opens and shows information about your Xerox DocuMate 752 scanner.



2. Click the **Properties** button.



Your scanner has a built-in power saving feature that is set to power down after 15 minutes of idle time. You can change the time before the scanner powers down, from 1 minute to a maximum of 3 hours.

3. Click the arrows for the Lamp timeout setting and choose a time setting.

To return the scanner to its factory settings, click **Reset Device**.

4. Click **OK** to save the changes and close the dialog box.