



One Touch with Kofax VRS Technology

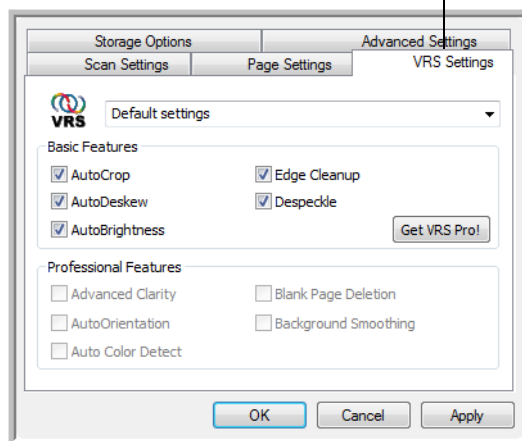
Mini Guide

The One Touch 4.0 software you received with your Xerox scanner now includes the Kofax® Virtual ReScan® (VRS™) technology. This application has a set of features for improving and enhancing the quality of scanned documents, especially documents that would usually produce poorer quality images. For example, the AutoBrightness option analyzes the document to determine if it's too light or dark to produce a clear, legible image, or if the background and highlighted areas of the image are indistinct. AutoBrightness then automatically adjusts the brightness. Scan configurations with VRS options work with One Touch scan settings to produce the best quality images.

This brief Mini Guide explains how to use the Kofax VRS features when choosing new scan settings for your scanner. These new VRS options are in addition to the scan settings currently described in your scanner's *User's Guide*. Please use this Mini Guide as a supplement to your current *User's Guide*.

The VRS options appear on the Scan Configuration Properties window that you use to create a new scan configuration for your scanner.

Click the VRS Settings tab to see the new VRS options available for your scanner.



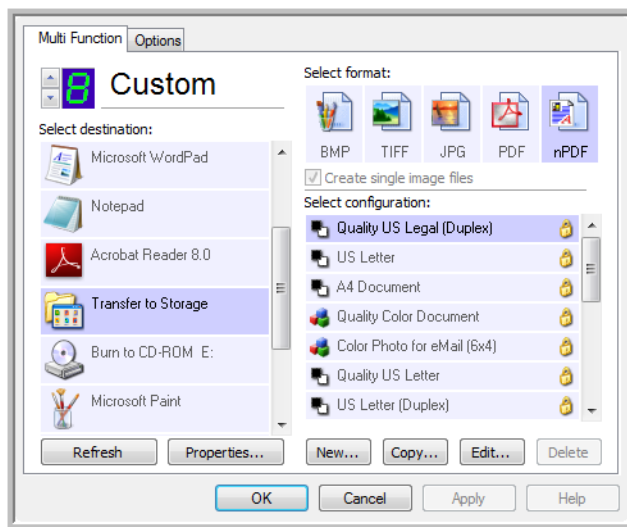
When you first install the software, the Basic Features will be available and a button, **Get VRS Pro**, will also be on the window.

If you would like to purchase VRS Professional to be able to use the Professional Features of VRS, click the **Get VRS Pro** button.

NOTE: Some of the illustrations in this Mini Guide may not look exactly as they appear on your computer's screen. The differences are minor and do not affect the steps to use the new features.

The Kofax VRS Settings

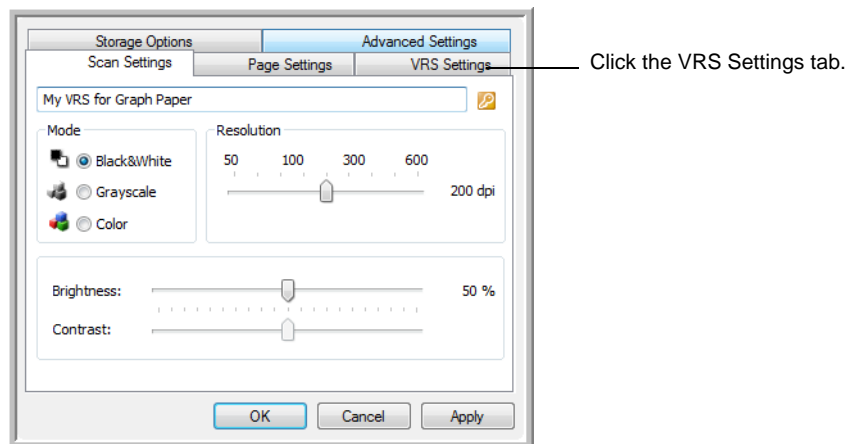
You select the Kofax VRS settings when creating or editing a scan configuration on the One Touch 4.0 Properties window.



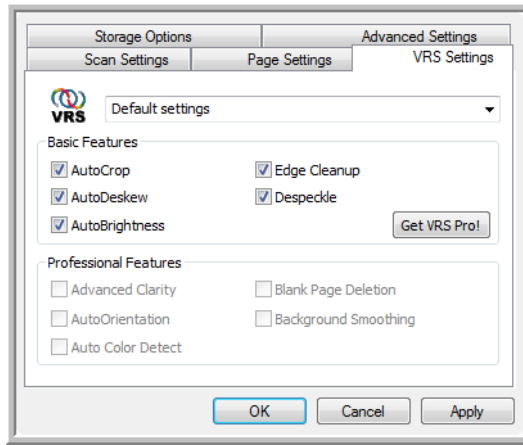
To select the Kofax VRS settings:

1. Open the One Touch 4.0 Properties window.
2. Click the **New** button to create a new configuration, or select one of your custom configurations you created earlier and click the **Edit** button.

The Scan Configuration Properties window opens.



3. Click the VRS Settings tab to see the new VRS settings.



4. Choose the Kofax VRS options for the scan configuration.
5. Click the drop-down arrow to choose the type of VRS settings to use for the new scan configuration. The options are:
 - **Do not use VRS processing**—Scanning will not use the VRS processing.
 - **Default settings**—Automatically selects the options your scanner can use with any scan mode (Black&White, Grayscale, and Color).

The Basic Features are:

- **AutoCrop**—Determines the size of the item being scanned and produces an image of the same size. For example, if you scan a postcard-sized document, the resulting image will be the size of the postcard. This option overrides the page size setting.
- **AutoDeskew**—Detects the edges of a document and determines if they are straight or skewed. If the page is skewed, the image will be adjusted so it is straightened. However, if the page is fed through the scanner at too great an angle, the image may not straighten correctly. In that case, re-scan the page using the paper guides to feed the paper in straight.
- **AutoBrightness**—Sets the brightness to achieve the best balance between the document's background, foreground, and highlighted areas. For grayscale images, lighter areas become whiter and darker areas become blacker. AutoBrightness is not available for Color scan configurations.
- **Edge Cleanup**—Sometimes a scan image will have a thin black outline around its edges. This VRS option replaces those black outlines with white. Edge Cleanup only applies if AutoCrop and AutoDeskew are selected so the software can determine where the edges are located. Therefore, selecting Edge Cleanup will also select AutoCrop and AutoDeskew. Edge Cleanup is only available for Black&White scan configurations.
- **DeSpeckle**—Speckles are small spots on an image that the scanner interpreted as a valid part of the document. For example, an irregularity in the paper, or a small wrinkle, or the holes where a staple was removed may show up as speckles on the scanned image. The DeSpeckle option identifies these spots and removes them. DeSpeckle is only available for Black&White scan configurations.

If you upgrade your scanner's VRS software to the VRS Professional version, the Professional Features shown at the bottom of the window become active.

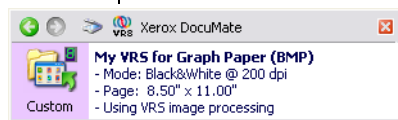
The Professional Features are:

- **Advanced Clarity**—Produces a clear, legible image even for documents that have complex or textured backgrounds, such as graph paper, blueprints, and security paper. The Advanced Clarity option identifies the text and drawings in the foreground and produces a scan image that keeps the background from obscuring them. Advanced Clarity is only available for Black&White scan configurations.
- **AutoOrientation**—Recognizes text on the page and rotates the image 90, 180, or 270 degrees so the text is right side up. The AutoDeskew option must also be selected with the AutoOrientation option.
- **Auto Color Detect**—Determines if a document contains color or not and produces the appropriate scanned image. Typically, Auto Color Detect is used when you have a stack of pages to scan, some color and others not. Instead of you having to change the scan settings from Color to Black&White and back again, the scanner can choose the correct settings automatically.
- **Blank Page Deletion**—Recognizes when a page is blank and removes its image. For instance, if you are scanning a stack of pages that includes a blank page, its image will not be included with the other images from the stack.
- **Background Smoothing**—Sometimes a document with a background color on the page will produce a scanned image that has small imperfections in the color. This option recognizes a document's background color and makes sure it is a smooth, solid color. Background Smoothing is not available for Black&White scan configurations.

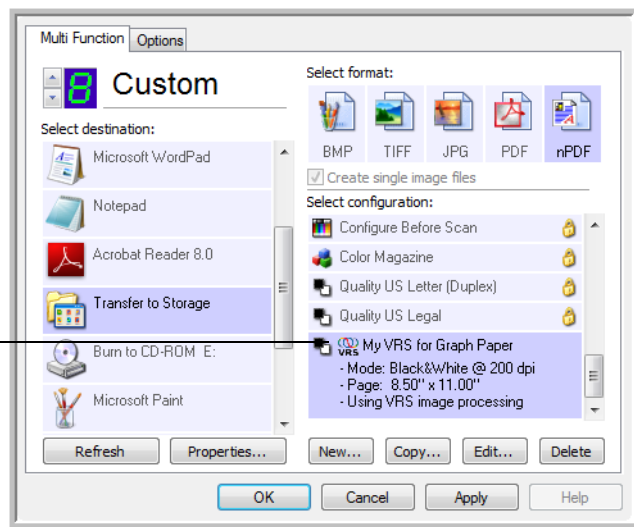
6. Click **OK** or **Apply** to add the VRS options to your scan configuration.

When a scan configuration includes VRS options, the One Touch Panel and the One Touch Properties window both show the VRS icon as a reminder.

The VRS icon on the top of the One Touch Panel and on the scan configuration remind you that the scan will use the VRS settings.



The summary of the scan settings also indicates VRS settings.



Thank you for choosing Xerox!

Copyright © 2007, Visioneer, Inc.

XEROX® is a trademark of Xerox Corporation in the United States and/or other countries and is used under license. DocuMate™ is a trademark of Xerox Corporation used under license. Windows is a trademark of Microsoft Corporation. Kofax® and Virtual ReScan® are registered trademarks, and VRS™ is a trademark of Kofax Image Products, Inc. Adobe®, Adobe® Acrobat®, Acrobat® Reader®, and the Adobe® Acrobat® PDF® logo are registered trademarks of Adobe Systems Incorporated in the United States and/or other countries. The Adobe PDF logo will appear in this product's software, and full access to Adobe software features is only available if any Adobe product is installed on your computer.

05-0738-000