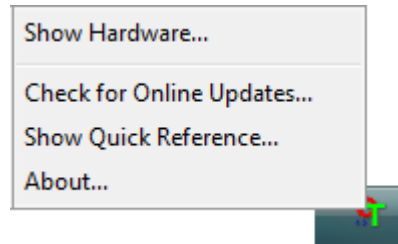
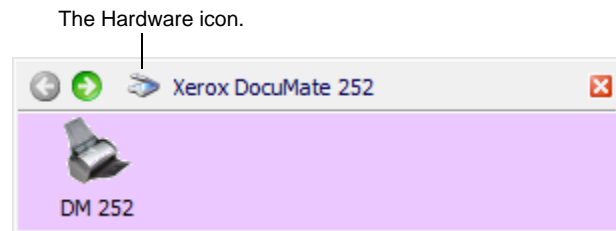


How to Adjust the Power Save Settings for the DocuMate 252

1. Right-click on the One Touch icon and choose **Show Hardware** from the pop-up menu.

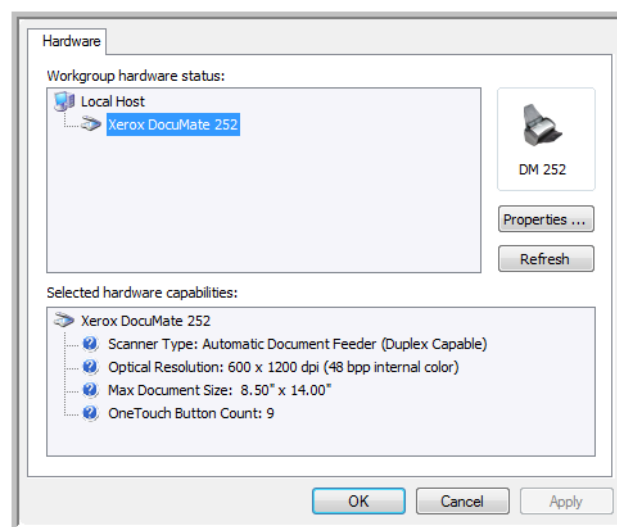


You can also click the scanner icon at the top of the One Touch Button Panel.

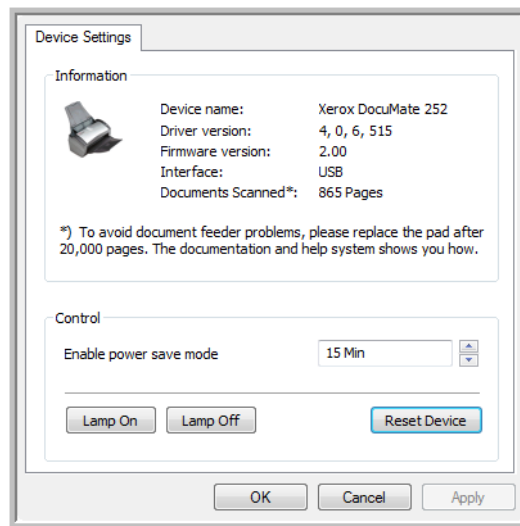


If the Hardware View of the panel is open you can also right-click on the DM252 icon.

The Hardware Properties dialog box opens and shows information about your Xerox DocuMate 252 scanner.



2. Click the **Properties** button.



Your scanner has a built-in power saving feature that is set to power down after 15 minutes of idle time. You can change the time before the scanner powers down, from 1 minute to a maximum of 3 hours.

3. Click the arrows for the Lamp timeout setting and choose a time setting.

To return the scanner to its factory settings, click **Reset Device**.

4. Click **OK** to save the changes and close the dialog box.